

MN DeafBlind Census Facts as of December 1, 2007

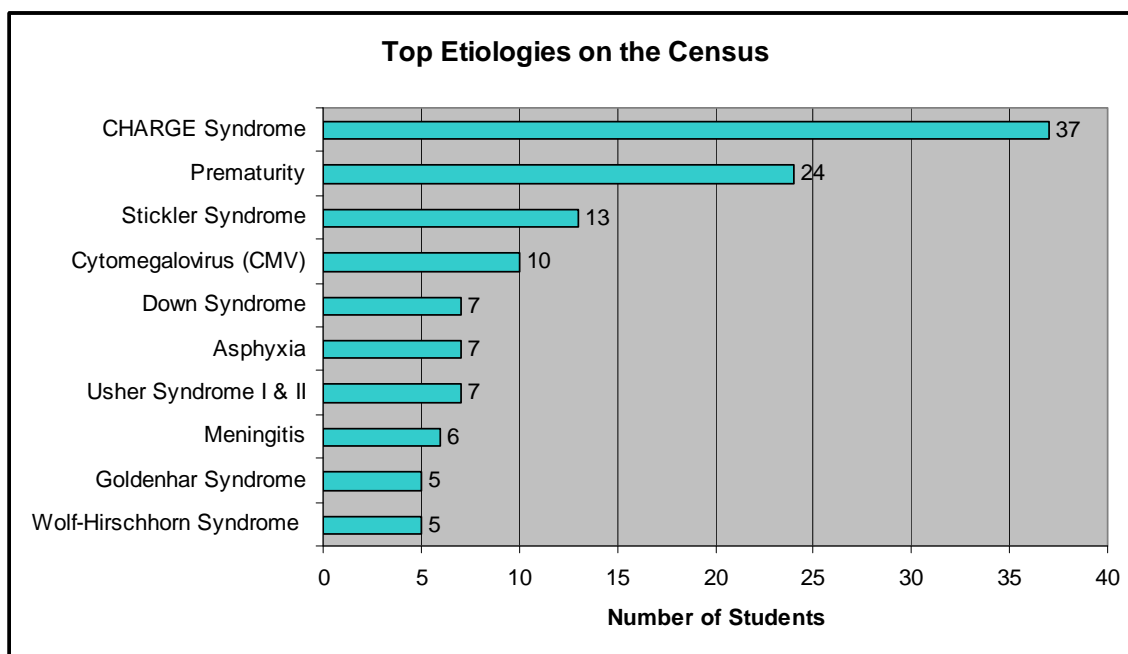


- 253 students reported, including 48 newly identified
- 127 males and 126 females
- 136 (54%) in Greater Minnesota and 117 (46%) in the 7-County Metro Area
- 192 (76%) Caucasian and 61 (24%) Minority
- 10% of students are in Early Childhood (Birth – 2 years old)
- 30% of students have **DeafBlindness** as their primary disability
- 15 students exited the census (graduated, moved, passed away or no longer DeafBlind)

Primary Identified Etiology Alphabetical

| | | | | | |
|------------------------------|----|---|---|------------------------------------|----|
| Alstrom Syndrome | 1 | Encephalitis | 2 | Stickler Syndrome | 13 |
| Apert Syndrome | 1 | Fetal Alcohol Syndrome | 3 | Stroke | 2 |
| Asphyxia | 8 | Goldenhar Syndrome | 5 | Treacher Collins Syndrome | 1 |
| CHARGE Syndrome | 37 | Hydrocephaly | 4 | Trisomy 13 (13-15, Patau Syndrome) | 1 |
| Chromosome 18, Ring 18 | 3 | Maroteaux-Lamy Syndrome | 1 | Trisomy 18 (Edwards Syn.) | 1 |
| Cockayne Syndrome | 2 | Marshall Syndrome | 3 | Tumor | 2 |
| Complications of Prematurity | 24 | Maternal Drug Use | 3 | Turner Syndrome | 1 |
| Congenital Rubella Syndrome | 1 | Meningitis | 6 | Usher Syndrome I | 5 |
| Congenital Toxoplasmosis | 1 | Microcephaly | 3 | Usher Syndrome II | 2 |
| Cornelia de Lange Syndrome | 3 | NF 2 - Bilateral Acoustic Neurofibromatosis | 1 | Waardenburg Syndrome | 3 |
| Crouzon Syndrome | 1 | Norrie Disease | 1 | Wolf-Hirschhorn Syndrome | 5 |
| Cytomegalovirus (CMV) | 10 | Pfieffer Syndrome | 1 | Unknown | 28 |
| Dandy Walker Syndrome | 2 | Pierre-Robin Syndrome | 2 | Other Chromosome Disorders | 41 |
| Direct Trauma to Ear/Eye | 1 | Severe Head Injury | 3 | Other Congenital Complications | 6 |
| Down Syndrome | 7 | | | Other Non-Congenital Comp. | 2 |

Top Etiologies on the Census



Cathy Lyle, Education Consultant 612.638-1526 – cathy.lyle@metroecu.org

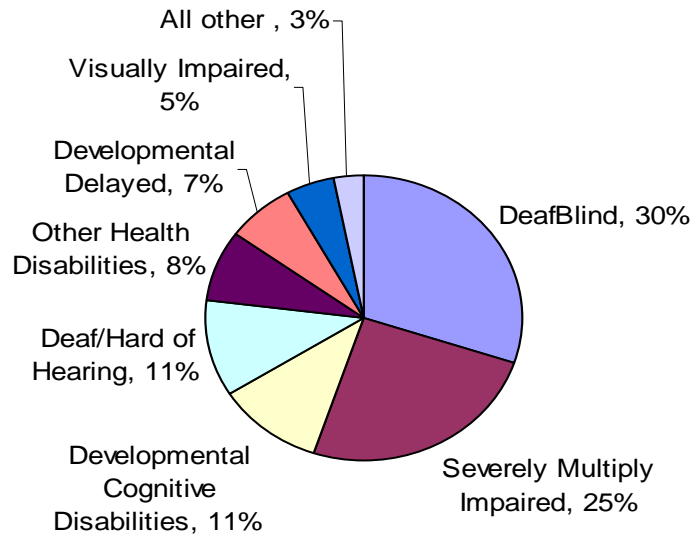
Sally Prouty, Family Specialist 612.638-1525 – sally.prouty@metroecu.org

Minnesota DeafBlind Technical Assistance Project

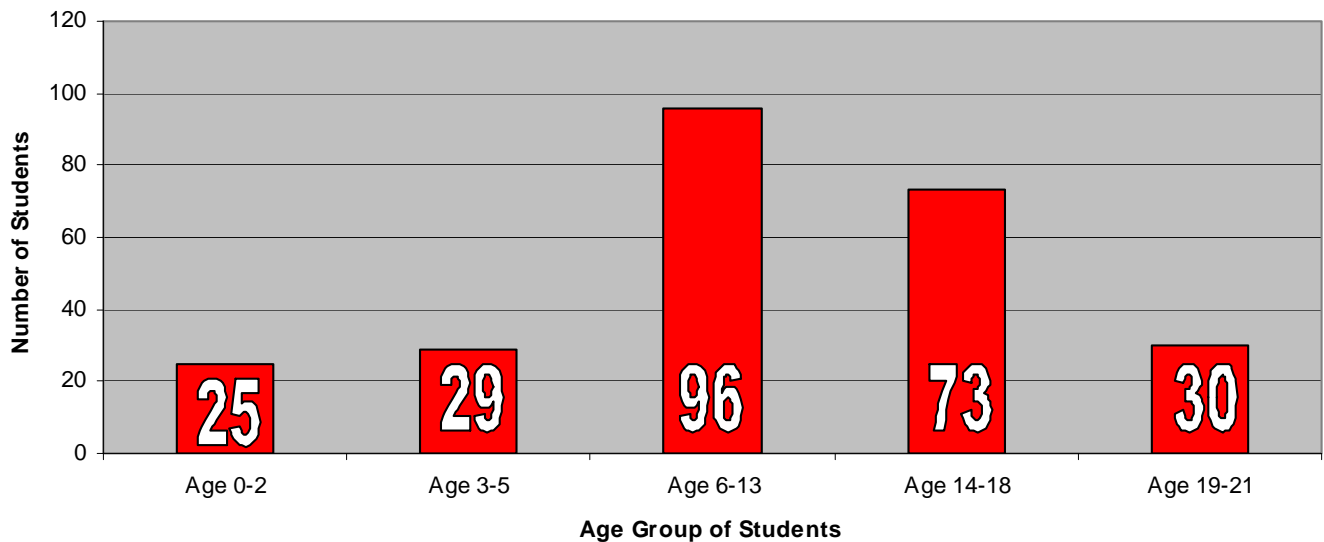
3055 Old Hwy 8 #302, St. Anthony, MN 55418 – mndb@skypoint.com

MN DeafBlind Census Facts as of December 1, 2007

Primary Disability on IEP as reported on Census



Age of Students on Census



Cathy Lyle, Education Consultant 612.638-1526 – cathy.lyle@metroecsuo.org

Sally Prouty, Family Specialist 612.638-1525 – sally.prouty@metroecsuo.org

Minnesota DeafBlind Technical Assistance Project

3055 Old Hwy 8 #302, St. Anthony, MN 55418 – mndb@skypoint.com

